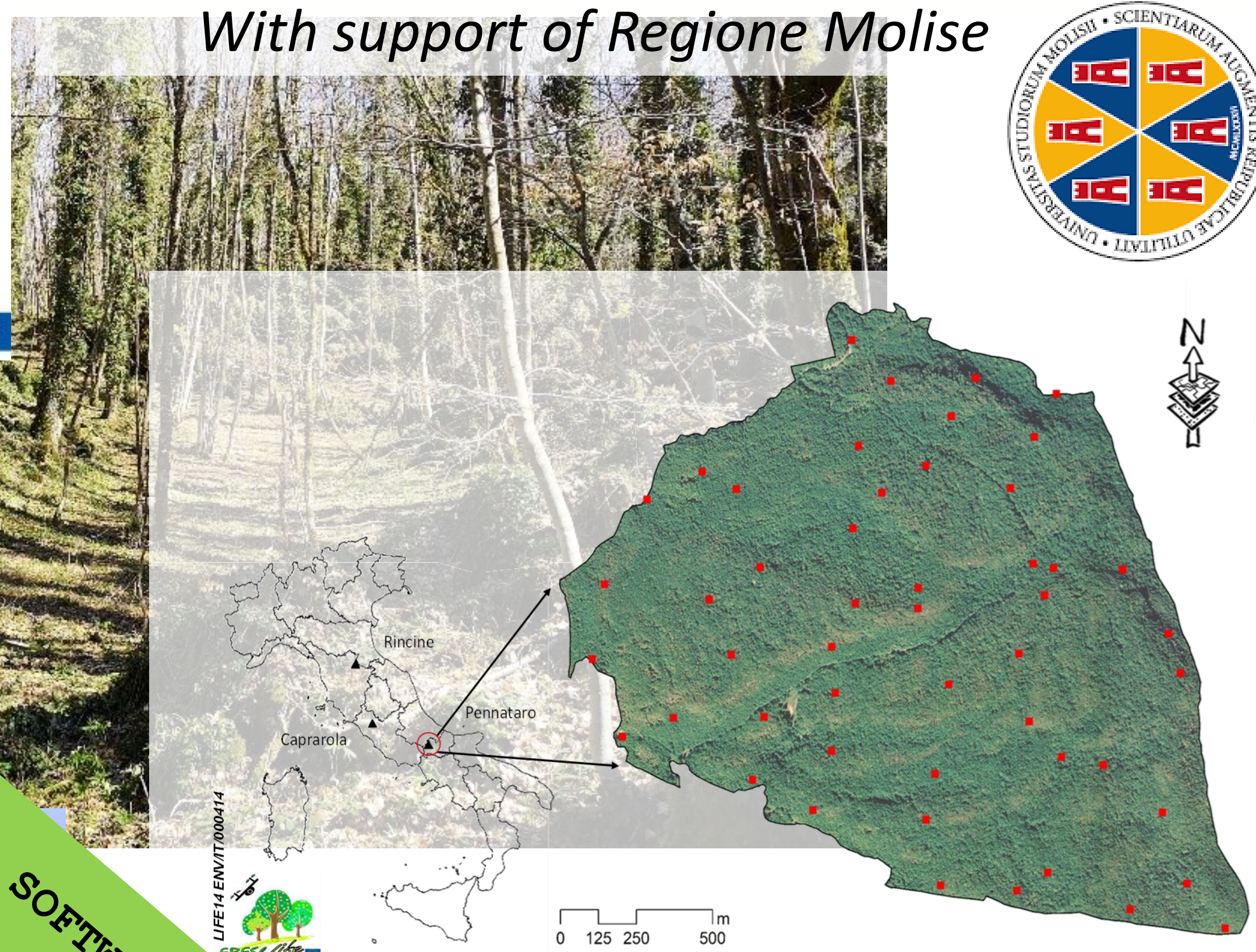
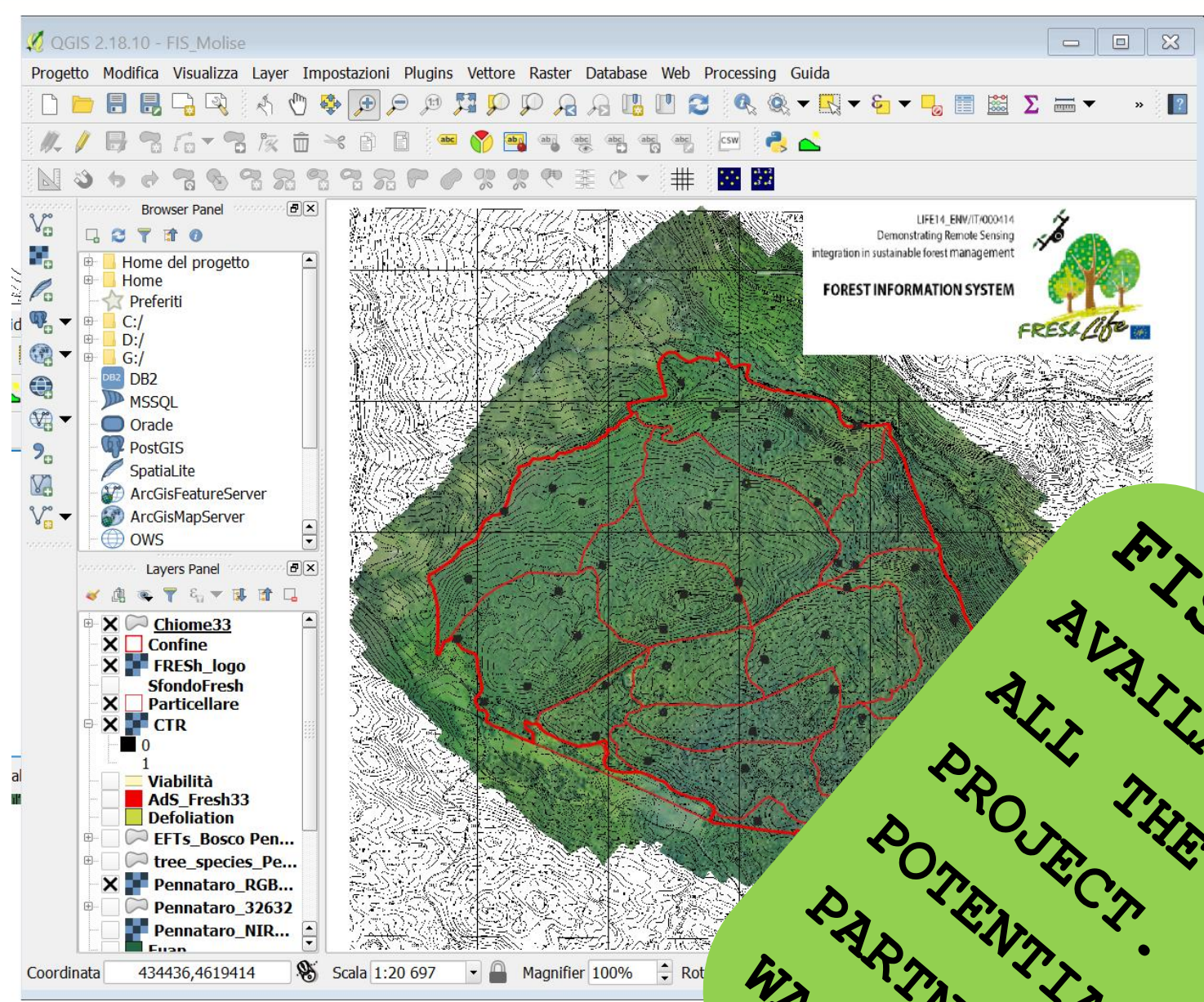


# FOREST INFORMATION SYSTEM

## BOSCO PENNATARO



Contributing authors  
*Santopuoli G., Lasserre B., Alvites C.*  
*With support of Regione Molise*



FIS IS BASED ON THE QGIS SOFTWARE, WHICH IS ALREADY AVAILABLE AT FOREST MANAGERS OFFICES AND LOADED WITH ALL THE LAYERS OBTAINED IN ACTIONS OF THE FRESH LIFE PROJECT. QGIS IS AN OPEN SOURCE GIS THAT AS THE SAME POTENTIALITY OF PROPRIETARY ONES BUT ALLOW THE PROJECT PARTNERS TO INSTALL THE FIS ON ALL THE COMPUTERS THEY WANT WITHOUT LICENSE PROBLEMS.

GOVERNANCE OF BOSCO PENNATARO

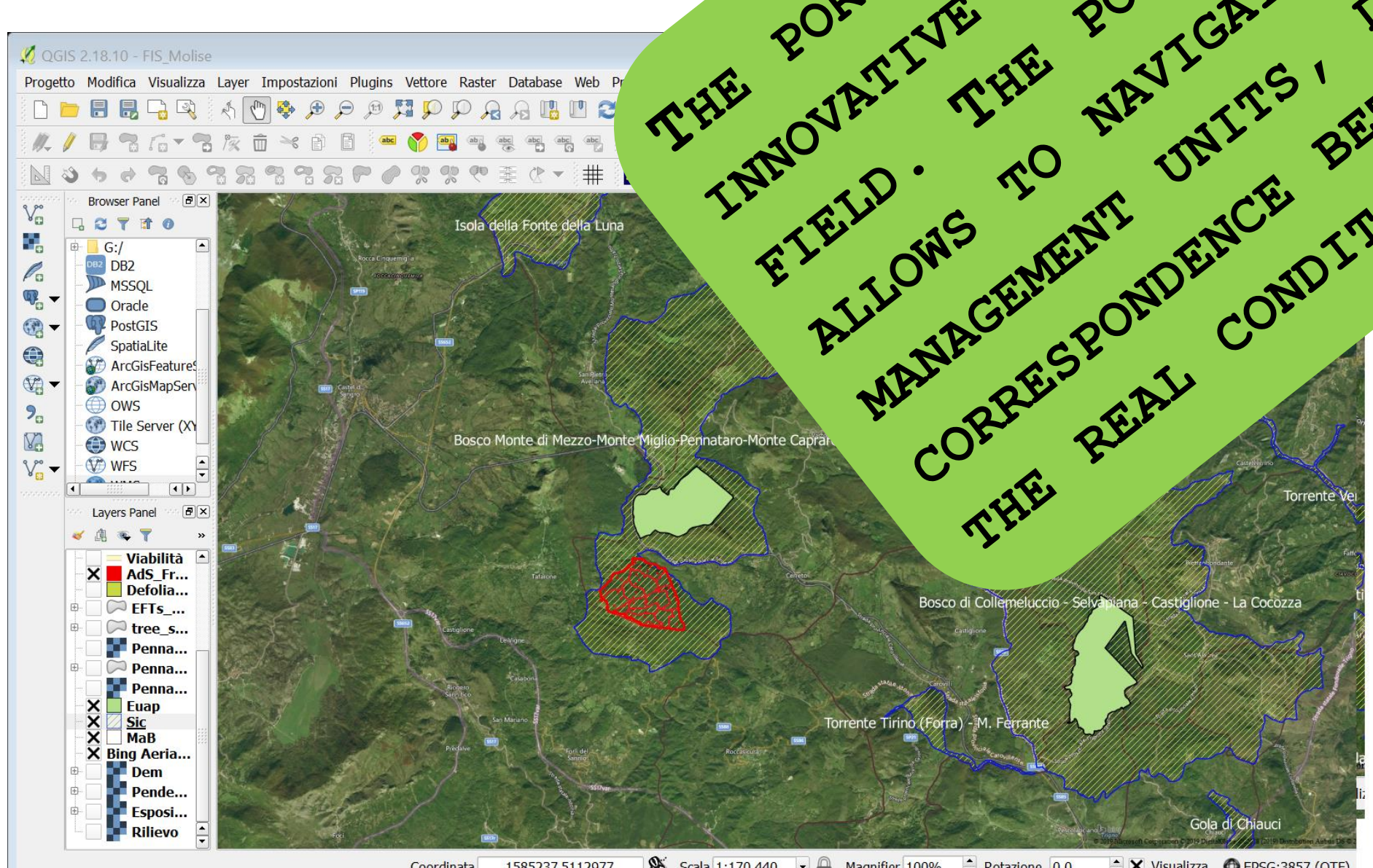


FIS ALLOWS TO IMPORT LAYERS DERIVED FROM OTHER PROJECT, AS WELL AS TO MAKE OVERLAY WITH GOOGLE SATELLITE, BING, OSM, AND OTHER GEOREFERENCED DATA. THIS FACILITATE THE INTERACTION AMONG REGIONAL BUREAUS, (I.E.WITH NATURE CONSERVATION, AGRICULTURE), SUPPORTING FOREST PLANNING AT A LARGE SCALE, AS FOR EXAMPLE MAPPING HABITAT TREES

THE FOREST INFORMATION SYSTEM IS A WORKING TOOL, DESIGNED TO SUPPORT FOREST MANAGER O PERFORM CERTAIN RECURRENT TASKS



FIS CAN BE USED FOR THE MANAGEMENT OF SITES OF NATURA2000 NETWORK.



THE PORTABILITY OF FIS REPRESENTS AN INTERESTING, INNOVATIVE AND USEFUL MODE TO USE FIS DIRECTLY IN THE FIELD. THE POSITIONING CAPABILITY OF MOBILE DEVICES ALLOWS TO NAVIGATE IN THE FOREST, THROUGHOUT FOREST MANAGEMENT UNITS, DIRECTLY WITH FIS, OBSERVING THE CORRESPONDENCE BETWEEN ASSESSED FOREST INDICATORS AND THE REAL CONDITIONS OF THE FOREST.



XII Congresso Nazionale SISEF  
La Scienza Utile per le Foreste: ricerca e  
trasferimentoPalermo, 12-15 Novembre 2019